

THE ADVENTURES OF

# AQUA DUCK



**#2  
FREE**



**JOIN THE TEAM IN  
PROTECTING OUR  
DRINKING WATER!**



# TAKE YOUR HOUSEHOLD CONTAMINANTS TO ANY OF THESE LOCATIONS.

STORY AND ART BY  
**DAVID KELLEY**  
WWW.DEKEDESIGNS@HOTMAIL.COM



SPOKANE AQUIFER JOINT BOARD  
WWW.SPOKANEAQUIFER.ORG



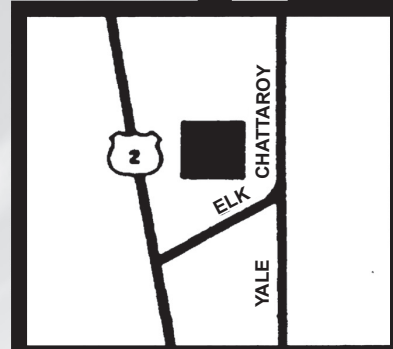
www.ksp.org  
1-800-735-2377



WASHINGTON STATE  
DEPARTMENT OF  
**ECOLOGY**  
www.ecy.wa.gov

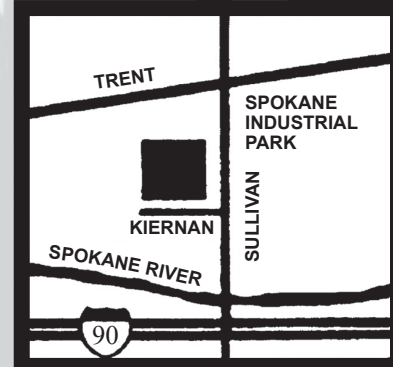
## SPOKANE NORTH COUNTY RECYCLING TRANSFER STATION

22123 Elk-Chattaroy Road  
Located at the intersection of Elk-Chattaroy and Highway 2.



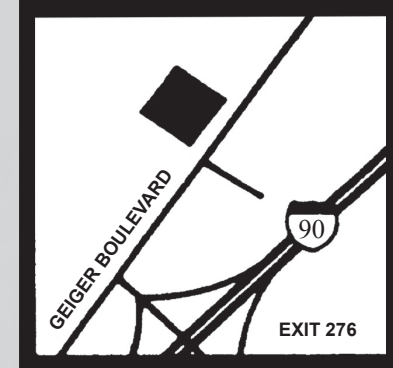
## SPOKANE VALLEY VALLEY RECYCLING TRANSFER STATION

3941 North Sullivan Road  
Located south of Trent and across from Spokane Industrial Park.



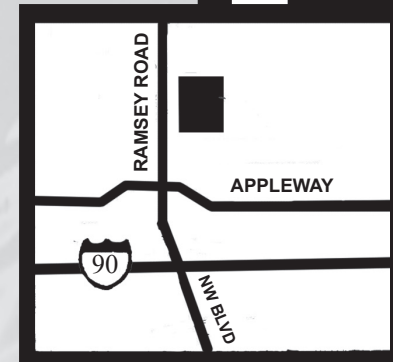
## SPOKANE WASTE-to-ENERGY Facility RECYCLING CENTER

2900 South Geiger Boulevard  
Located west of Spokane, across from the Washington State Patrol.  
Call (509) 625-6800 for info.



## COEUR D' ALENE RAMSEY ROAD WASTE RECYCLING CENTER

From Interstate 90, take Exit 11 (Ramsey Road / NW Blvd) Head North 1 mile. Transfer Station on Right (East side)  
Call (208) 446-1430 for info.



Vol. 1 #2

Copyright © 2006 SAJB Comics.  
All Rights Reserved. No part of this book may be printed or reproduced without written permission of the publisher.

CITIZENS, WE ARE AGAIN CHALLENGED  
TO PROTECT THE AQUIFER.\*

SLUDGE WAS DEFEATED,  
BUT NOT DESTROYED.  
IT WILL RETURN.

WE MUST STOP THE CONTAMINATION AT THE SOURCE IN  
ORDER TO CONTINUE TO ENJOY OUR CLEAN DRINKING WATER. IT  
WILL REQUIRE THE HELP OF EVERY CITIZEN. YOU CAN HELP BY  
PROPERLY DISPOSING OF YOUR UNUSED  
HOUSEHOLD CONTAMINANTS PROPERLY.\*\*

THANK YOU ALL.

THANKS FOR COMING OUT  
FOLKS, AND REMEMBER TO  
DO YOUR PART.

I WANT TO THANK YOU ON BEHALF OF THE COMMUNITY, FOR  
THE AQUIFER PROTECTION TEAM'S BRAVERY.

THANKS MAYOR,  
I'LL TELL THE TEAM.

\*\* TAKE THEM TO ONE OF THE FOUR WASTE  
TRANSFER STATIONS SHOWN ON INSIDE MAP.

\*ANY UNDERGROUND PERMEABLE LAYER  
OF ROCK OR SEDIMENT THAT HOLDS WATER  
AND ALLOWS WATER TO FLOW THROUGH IT.

HI, I'M ON MY WAY TO THE WASTE TRANSFER STATION.  
HOW ARE THE WATER FUTURES\* TESTS GOING?

GOOD. WE'RE SEEING SOME  
UNEXPECTED RESULTS.

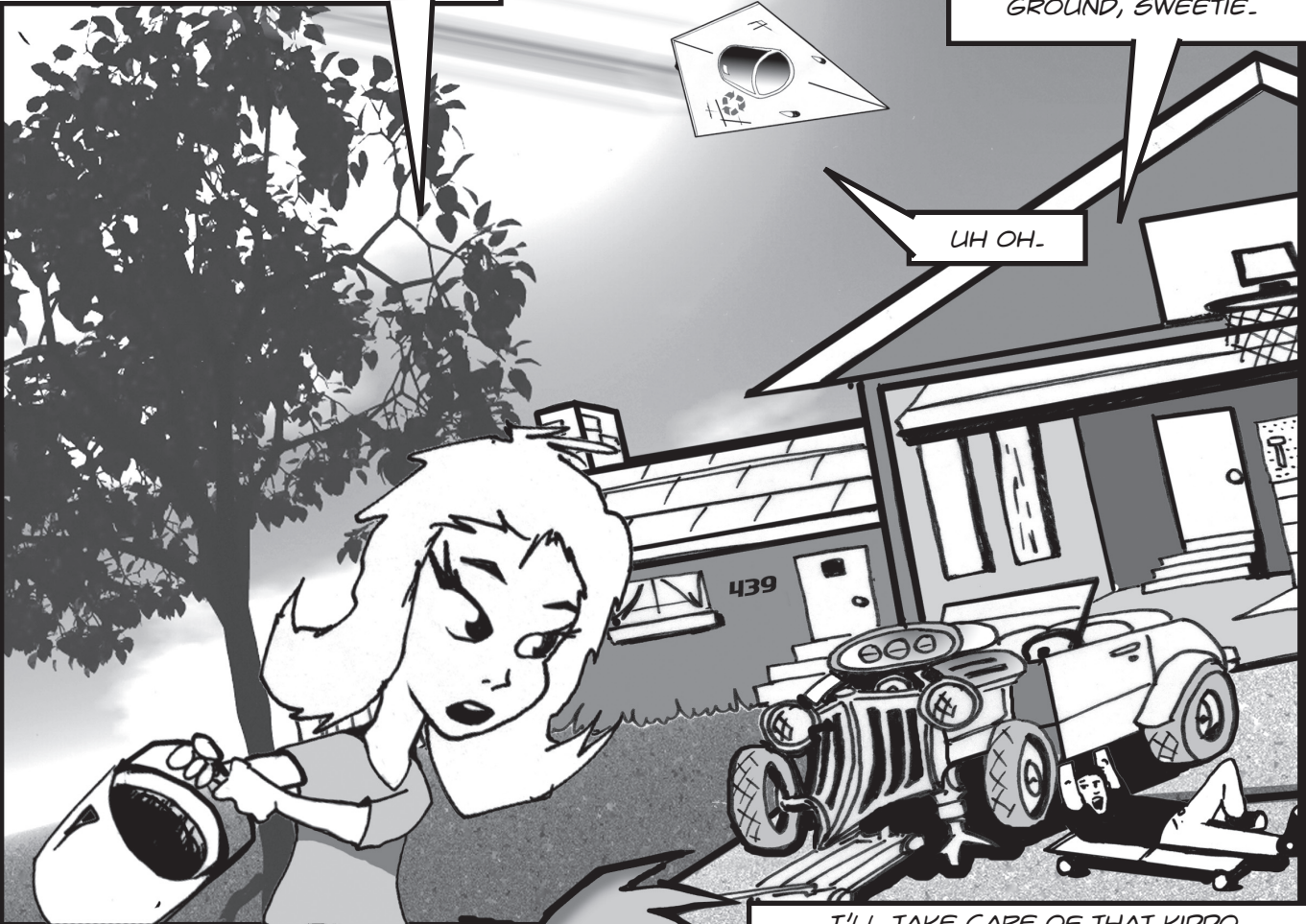
ALL RIGHT, I'LL SEE YA SOON!

\* A MEANS OF EXAMINING THE FUTURE OF WATER IN OUR REGION.

DADDY WHAT SHOULD I DO WITH THIS  
USED MOTOR OIL?

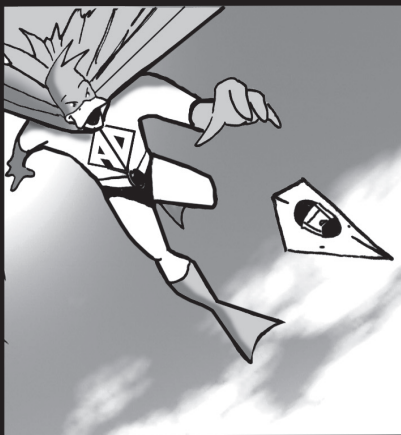
OH, JUST POUR IT OUT  
OVER THERE ON THE  
GROUND, SWEETIE.

UH OH.



I'LL TAKE CARE OF THAT KIDDO,  
I WAS HEADED TO THE WASTE TRANSFER  
STATION ANYWAY.

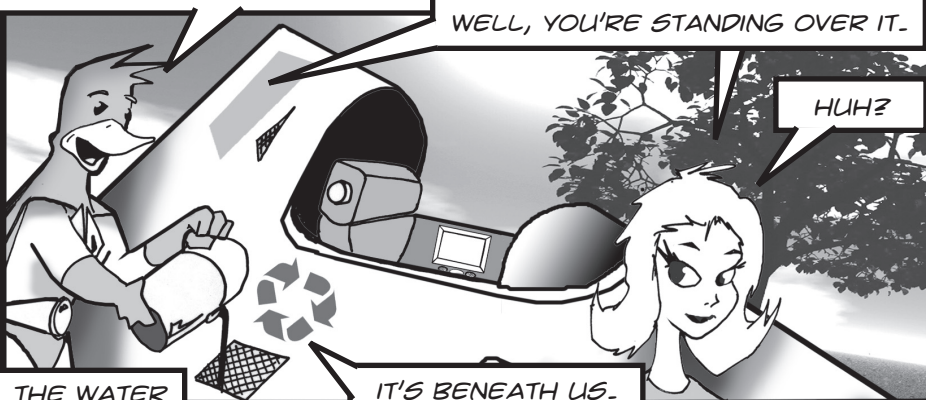
UH... SORRY ABOUT THAT,  
GUESS I WASN'T THINKING.



WE MUST PRACTICE PROPER WASTE DISPOSAL OR WE WILL CONTAMINATE THE AQUIFER.

WHERE IS THE AQUIFER?

THE SATURATED\* ZONE THAT GROUNDWATER FLOWS THROUGH IS CALLED AN AQUIFER.



WELL, YOU'RE STANDING OVER IT.

HUH?

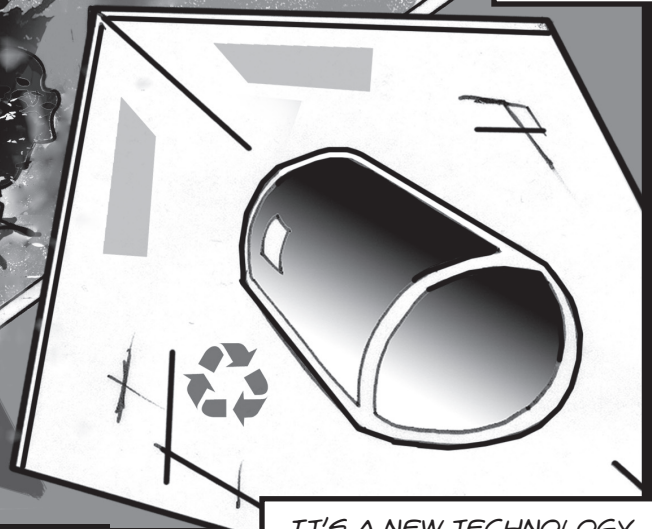
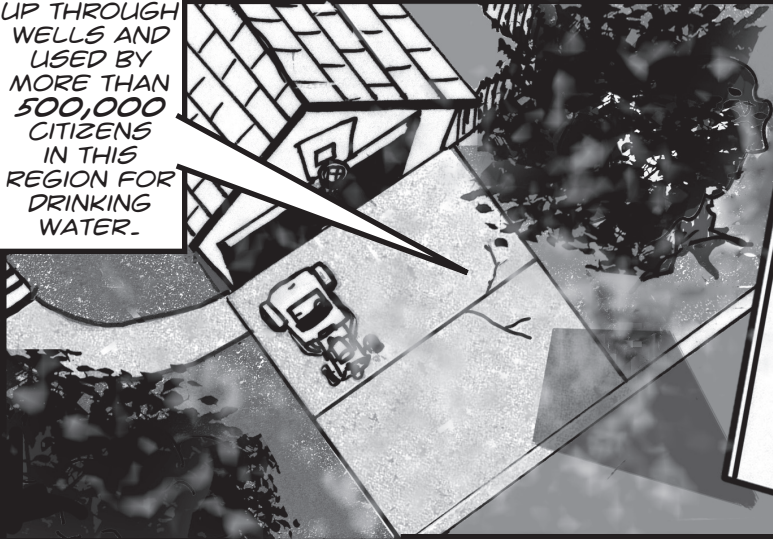


WOULD YOU LIKE TO SEE IT FIRST HAND?

YEAH!

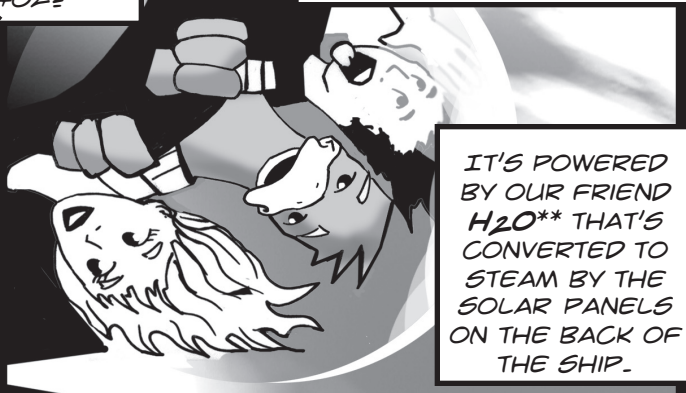
THE WATER IS PUMPED UP THROUGH WELLS AND USED BY MORE THAN 500,000 CITIZENS IN THIS REGION FOR DRINKING WATER.

IT'S BENEATH US.



IT'S A NEW TECHNOLOGY CALLED HYDRO-FUSION.

SO WHAT DO YOU GOT IN THIS THING, A 402?



IT'S POWERED BY OUR FRIEND H<sub>2</sub>O\*\* THAT'S CONVERTED TO STEAM BY THE SOLAR PANELS ON THE BACK OF THE SHIP.

\* FILLED WITH MOISTURE.

AND AS YOU CAN SEE, IT GENERATES MASSIVE HORSEPOWER.

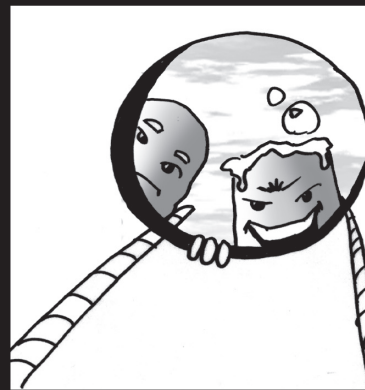
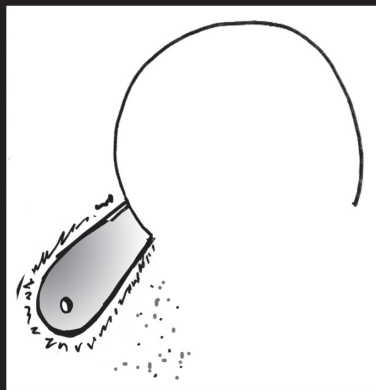
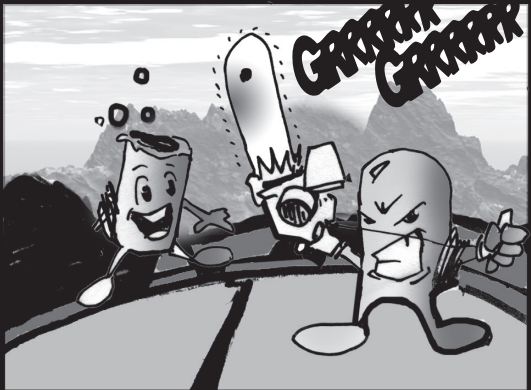
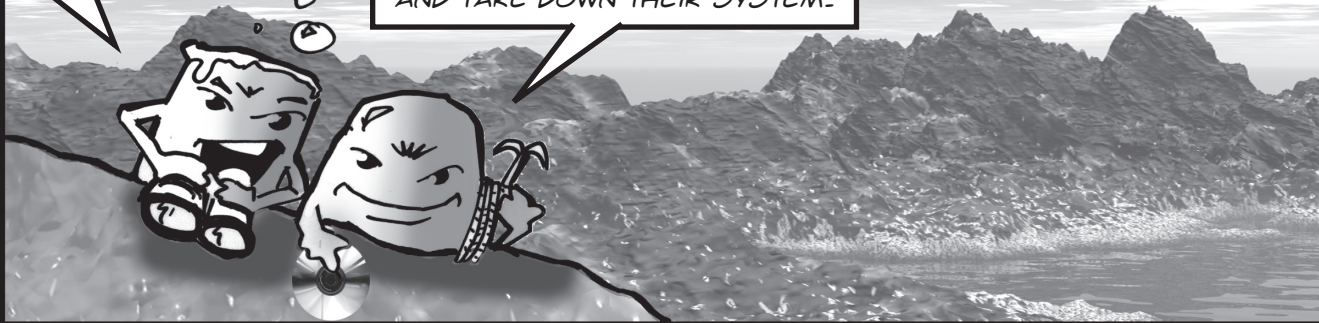


HOLD ON, WE'RE GOING UNDER!

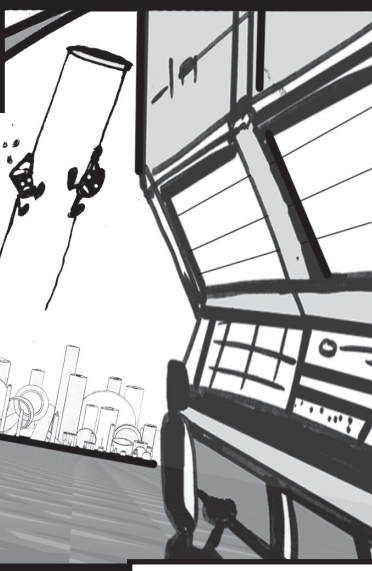
\*\* H<sub>2</sub>O = WATER MOLECULE REPRESENTED AS TWO PARTS HYDROGEN AND ONE PART OXYGEN.

RIGHT WHERE SLUDGE SAID IT WOULD BE.

GOOD, LET'S GET IN THERE AND INSTALL THIS COMPUTER VIRUS AND TAKE DOWN THEIR SYSTEM.



IF I TAKE THE WETTED PERIMETER\* OF THE AQUIFER EXTENT, AND DIVIDE BY 100 YEARS.....



HELLO, IS SOMEONE THERE?



LIGHTS OUT SMARTY PANTS.



\* OUTER BOUNDARY

THIS IS OUR **AQUIFER**. MORE THAN 320 SQUARE MILES WITHIN WASHINGTON AND IDAHO. IN SOME PLACES IT IS 600 FT. THICK.

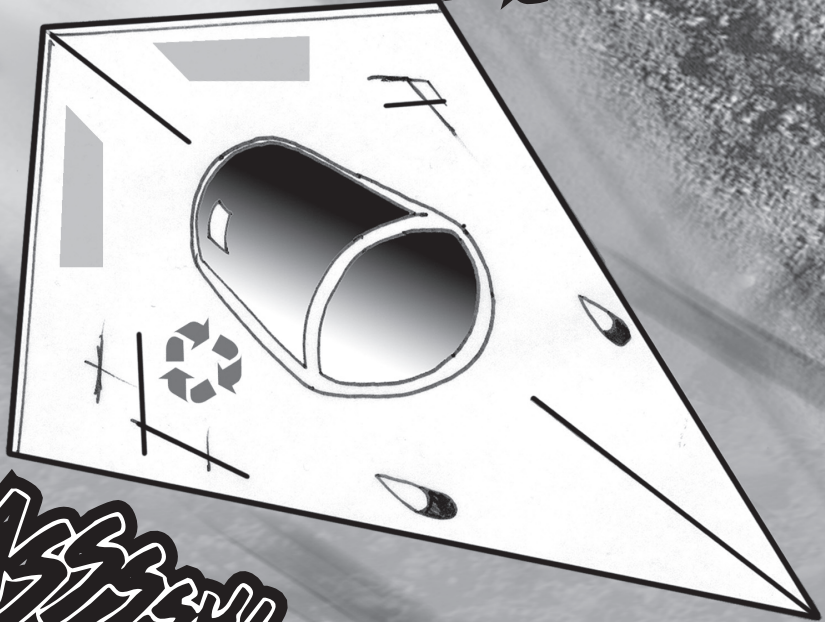
HERE YOU CAN SEE THE MANY LAYERS OF COARSE **SEDIMENTS\*** DEPOSITED BY **CATASTROPHIC\*\*** FLOODING DURING THE LAST ICE AGE, ABOUT 12,000 YEARS AGO .

THE GROUND WATER FLOWS THROUGH THIS MATERIAL UNTIL IT REACHES ONE OF OUR MANY WELLS. IT BECOMES DRINKING WATER WHEN WE PUMP IT TO THE SURFACE AT OUR WELL SITES AND THEN INTO UNDERGROUND PIPES TO HOMES, SCHOOLS AND BUSINESSES.

THE STUDY OF GROUND WATER IS THE SCIENCE OF **HYDROGEOLOGY\*\*\***, AND WE ARE ALWAYS MAKING NEW DISCOVERIES.

THE SHIP ALSO HAS A PARTICLE SHIELD THAT DISPLACES AND REPLACES THE EARTH AND ROCK AROUND THE SHIP WITHOUT DISRUPTING THE **AQUIFER**.

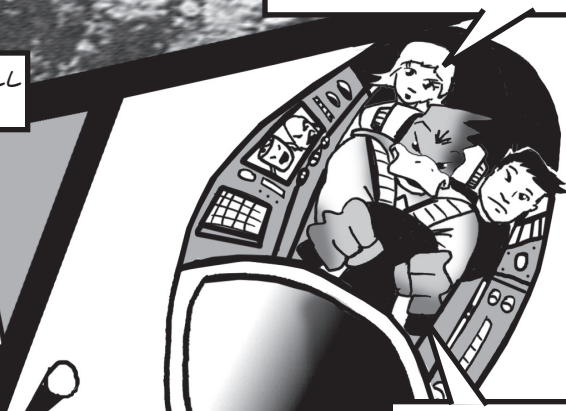
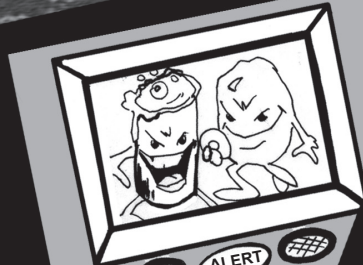
**SKRASSSH!**



**SKRASSSH!**

IS THIS PART OF A **HYDROGEOLOGIST'S** JOB?

UH OH, LOOKS LIKE TROUBLE, WE'LL HAVE TO CUT THE TOUR SHORT.



**HOLD ON!**

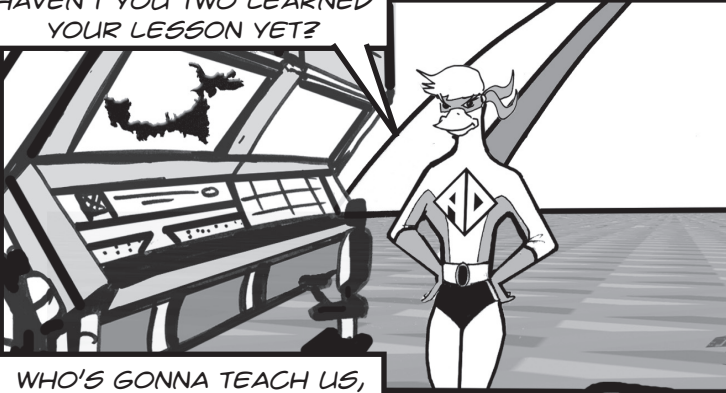
\* **MATTER** THAT SETTLES TO THE BOTTOM OF A LIQUID.



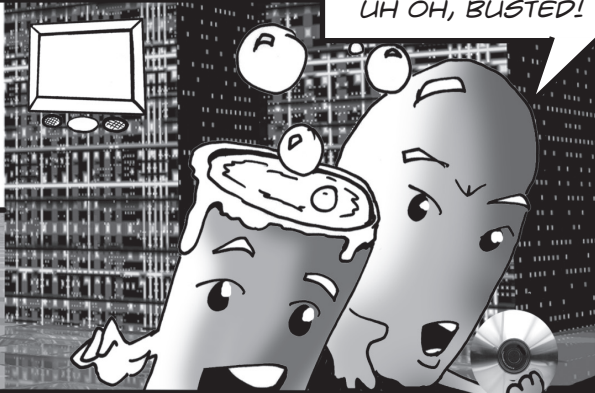
\*\* **WIDESPREAD RUIN**.

\*\*\* **THE STUDY OF UNDERGROUND WATER**.

HAVEN'T YOU TWO LEARNED YOUR LESSON YET?



UH OH, BUSTED!



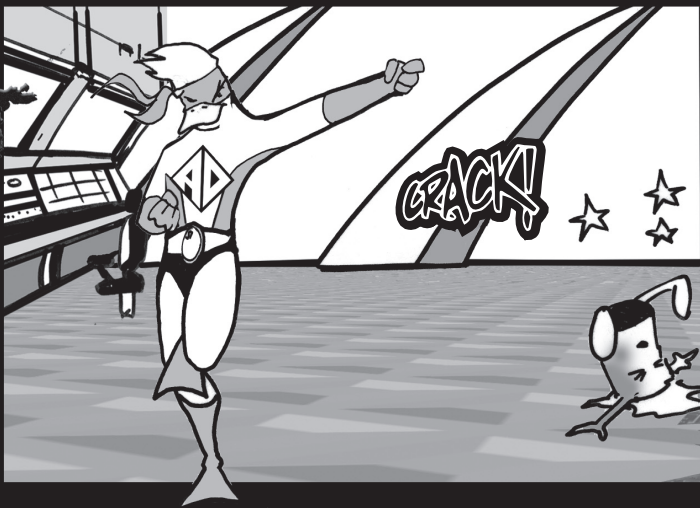
WHO'S GONNA TEACH US, ...YOU? HA HA HA!



LET'S GO!



GET HER!



CRACK! ☆ ☆



OWWWW!

PHOOMPH!



TOXIC SLUDGE HAMMER!

MY GRAPPLING HOOK WILL FINISH YOU OFF!

TAKA TAKA TAKA

SKRASHSH!

KABOOM!

NICE TRY.

I THINK YOUR AQUIFER CONTAMINATING DAYS ARE OVER!

KABOOM!





NOPE, THAT'S THE LAST WE'LL SEE OF THOSE TWO.

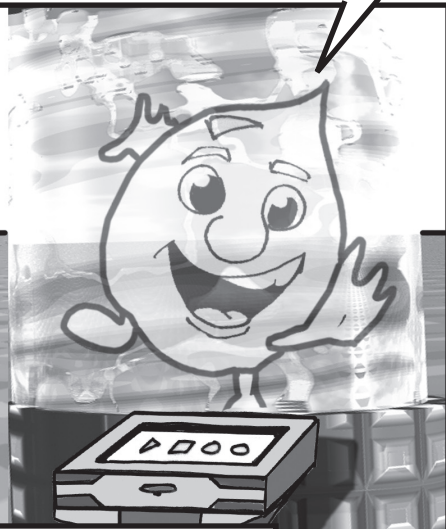
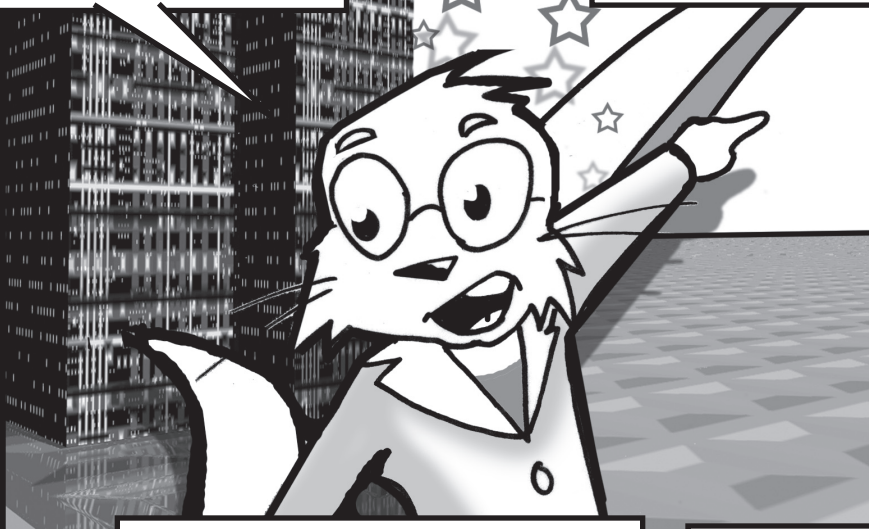


NICE WORK MALLORY. ANY PROBLEMS?



HEY GUYS! WE'VE GOT SOMETHING COMING THROUGH THE WATER FUTURES MACHINE!

GREETINGS PEOPLE OF THE PRESENT. I AM WILLY, AND I BRING YOU A MESSAGE OF WARNING!



IN THE NEAR FUTURE THERE WILL BE A SHORTAGE OF CLEAN DRINKING WATER, UNLESS YOU TAKE STEPS TO CONSERVE\* TODAY.

AND WHO SENT YOU FROM THE FUTURE WITH THIS MESSAGE?



YOU DID.

TO BE CONTINUED...

\* PROTECT AND AVOID WASTE.

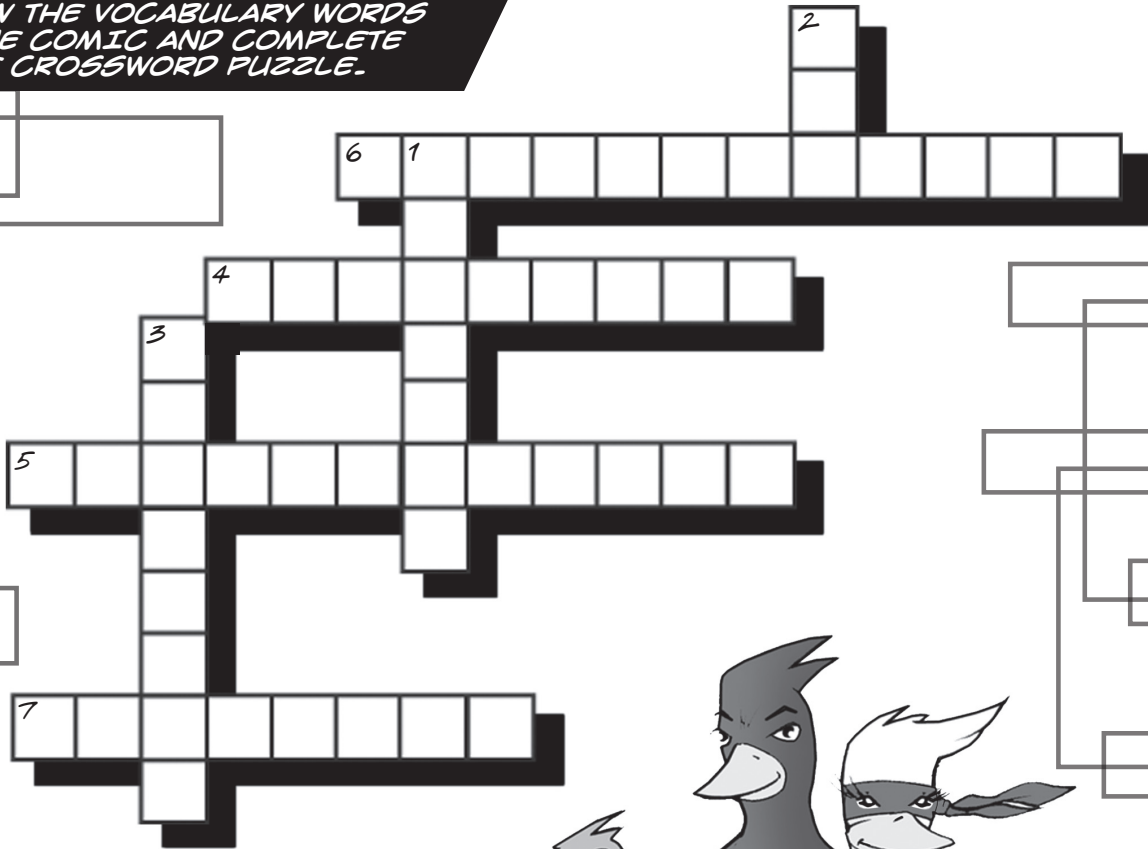
# CROSSWORD PUZZLE

## CROSSWORD PUZZLE

### CROSSWORD PUZZLE

#### CROSSWORD PUZZLE

REVIEW THE VOCABULARY WORDS  
IN THE COMIC AND COMPLETE  
THE CROSSWORD PUZZLE.

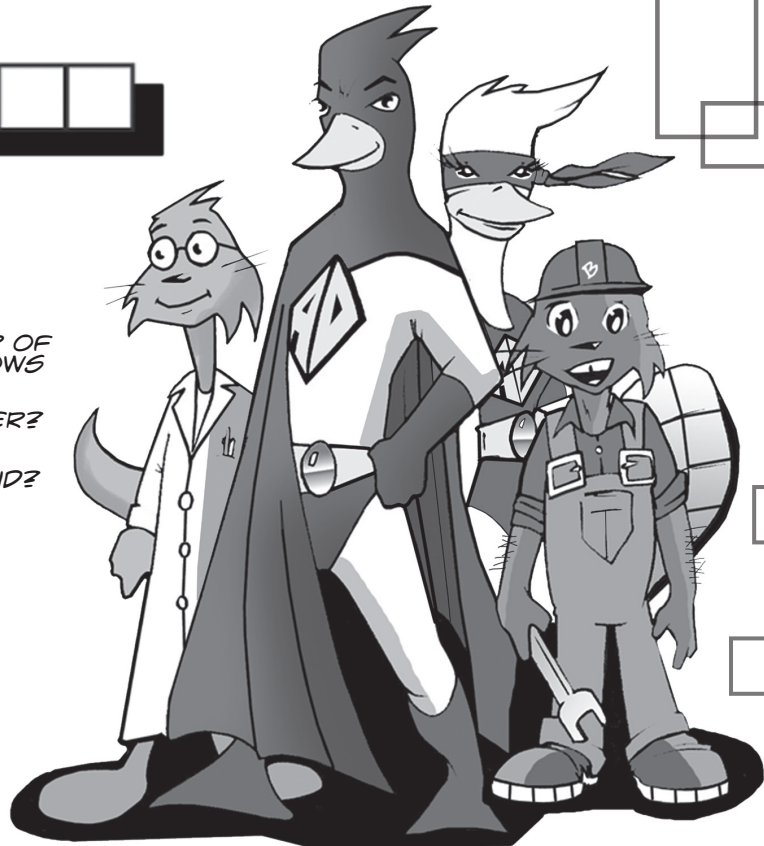


### DOWN

1. WHAT IS AN UNDERGROUND LAYER OF ROCK THAT HOLDS WATER AND ALLOWS WATER TO FLOW THROUGH IT?
2. WHAT IS THE FORMULA FOR WATER?
3. WHAT IS THE MATTER THAT SETTLES TO THE BOTTOM OF A LIQUID?

### ACROSS

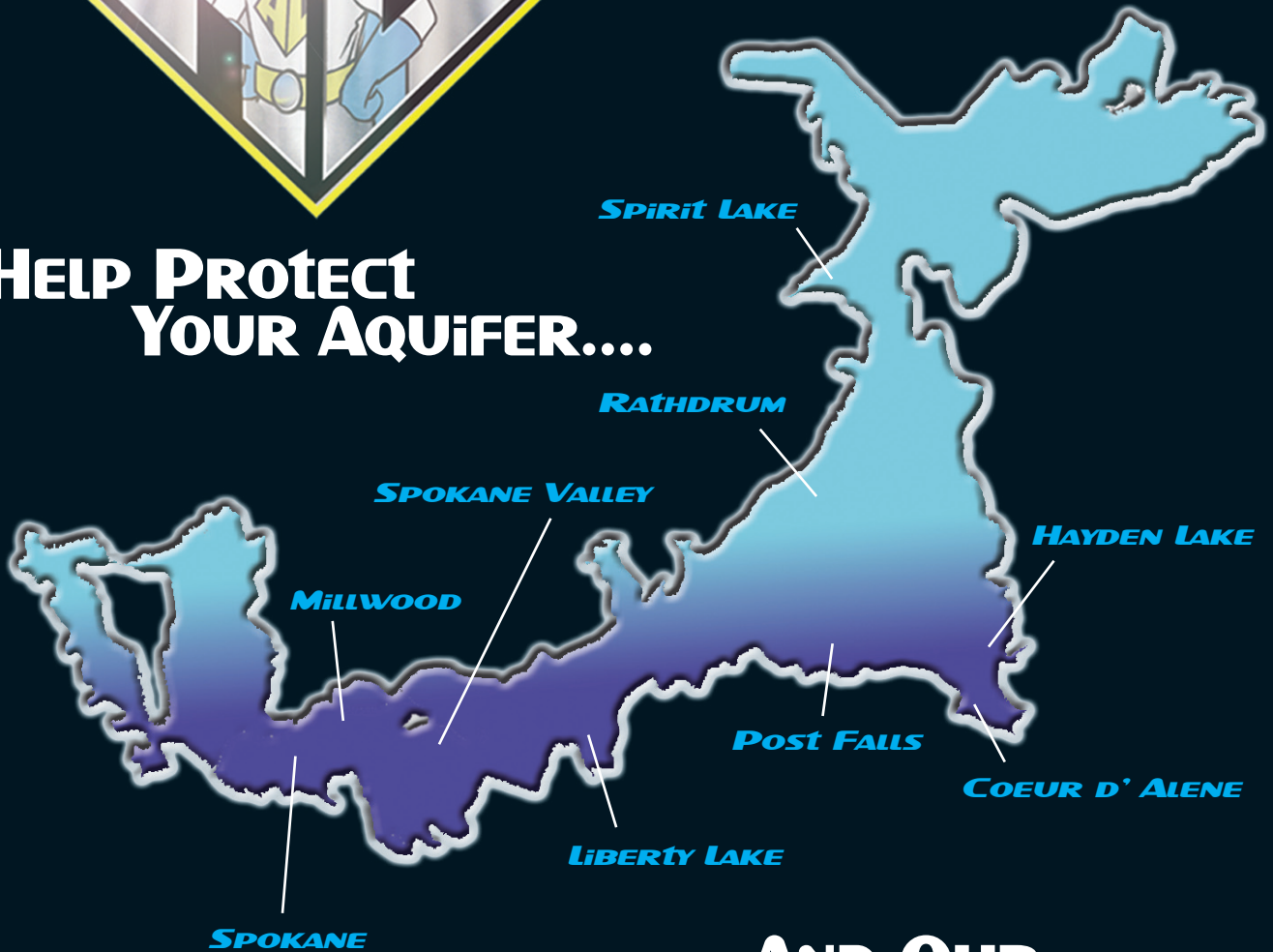
4. WHAT IS THE TERM FOR FILLED WITH MOISTURE?
5. WHAT IS THE STUDY OF UNDERGROUND WATER CALLED?
6. WHAT IS THE TERM FOR WIDESPREAD RUIN?
7. TO PROTECT AND AVOID WASTE.



OTTO    AQUA DUCK    MALLORY    BUCK



**HELP PROTECT  
YOUR AQUIFER...**



**...AND OUR  
DRINKING WATER!**



SPOKANE AQUIFER JOINT BOARD  
[WWW.SPOKANEAQUIFER.ORG](http://WWW.SPOKANEAQUIFER.ORG)



[www.kspss.org](http://www.kspss.org)  
1-800-735-2377



WASHINGTON STATE  
DEPARTMENT OF  
E C O L O G Y  
[www.ecy.wa.gov](http://www.ecy.wa.gov)

FOR ANOTHER FASCINATING\* TRIP, GO TO [WWW.SPOKANEAQUIFER.ORG](http://WWW.SPOKANEAQUIFER.ORG) CLICK ON 'KIDS/TEACHERS', AND TAKE EITHER OF THE AQUIFER VIRTUAL FIELD TRIPS.

\* COOL