

Historic Aquifer



Modern Electric & Water, 3,000 GPM, 1908



Irrigation System, Post Falls, ID 1900



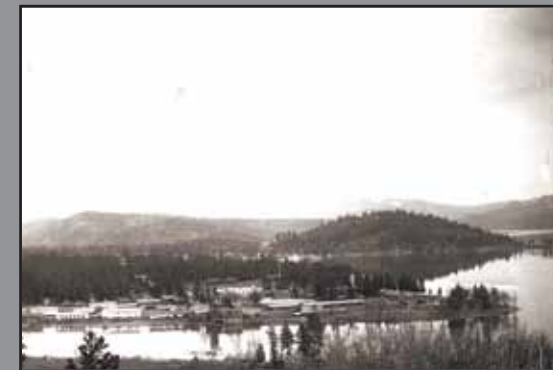
Pines Rd looking south to Broadway, 1908



Post Falls Lumber Co sawmill pre-1902



Apple orchard in Opportunity, WA 1908



Overview of Fort Sherman, ID 1890



Wood stave pipe, Rathdrum Prairie, ID 1961



Vera Water & Power, 1908



2004 photo with same view as watercolor

3

In 1860, James Madison Alden painted this watercolor of the Spokane Valley from near the present-day Arbor Crest Winery. In the foreground is Plante's Ferry.

