

## Modern Electric Water Company

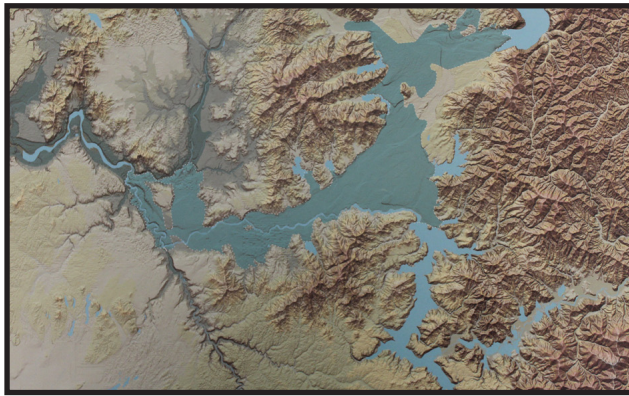
Modern is committed to being a leader in providing our community and our customers with traditional and innovative utility services. Modern is proud of its service record and is staffed with courteous and knowledgeable water professionals who are dedicated to meeting your needs. While we are proud of our past record, we continually strive to improve upon the quality of services we provide to you, our valued customer.

This Drinking Water Report is Modern's annual update on the quality and safety of its water. The report includes the water quality monitoring results performed on Modern's water system, in accordance with state and federal regulations. The testing period for this report is from January 1st to December 31, 2021. The report also provides access to references and telephone numbers to source water assessments, to health effects data, and to additional information about Modern's water system. This information allows you to make personal health-based decisions regarding your drinking water consumption and become more involved in decisions which may affect your health. We hope you find the information helpful.

Drinking water, including bottled water, may reasonably be expected to contain at least small amounts of some contaminants. The presence of contaminants does not necessarily indicate that water poses a health risk. More information about contaminants and potential health effects can be obtained by calling the EPA's Safe Drinking Water Hotline (1-800-426-4791).

Some people may be more vulnerable to contaminants in drinking water than the general population. Immunocompromised persons such as persons with cancer undergoing chemotherapy, persons who have undergone organ transplants, people with HIV/AIDS or other immune system disorders, some elderly, and infants can be particularly at risk from infections. These people should seek advice about drinking water from their health care providers. EPA/CDC guidelines on appropriate means to lessen the risk of infection by cryptosporidium and other microbial contaminants are available from the Safe Drinking Water Hotline (1-800-426-4791).

*Serving the Opportunity Area Since 1905*



Spokane Valley - Rathdrum Prairie Aquifer

### ***Your Tap Water is Safe to Drink!***

#### **Modern's Water Quality Commitment:**

You can count on us to . . .

- Provide you with the highest quality water possible.
- Sample, test and treat your water on a regular basis.
- Work diligently to meet every water quality standard.
- Maintain water distribution system reliability.
- Provide you with a high level of customer service.

#### **Contact Information:**

Washington State Department of Health  
Eastern Regional Office  
River View Corporate Center  
16201 East Indiana Avenue, Suite 1500  
Spokane Valley, WA 99216  
(509) 329-2100 • <http://www.doh.wa.gov>

Water Superintendent Jason Beesley  
Modern Electric Water Company  
904 North Pines Road  
Spokane Valley, WA 99206  
(509) 928-4540 • [modernelectricwater.com](http://modernelectricwater.com)



**MODERN**  
Electric Water Company  
reliably serving the Spokane Valley since 1905

**Presents**

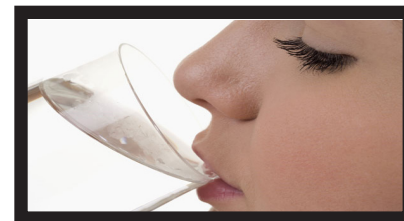
## **Your 2021 Annual Drinking Water Report**



# Modern Electric Water Company

## Year 2021 Annual Drinking Water Quality Report

**Mandatory Health-Related Standards Are Established by the Washington State Department of Health**



**Your Tap Water is  
Safe to Drink!**

The table to the left lists all the drinking water contaminants that were detected during the 2021 year or within the last 5 years. The presence of these contaminants in the water does not necessarily indicate that the water poses a health risk. The state requires monitoring for certain contaminants less than once a year because the concentrations of these contaminants are expected to vary significantly from year to year. Some data, though representative of the water quality, is more than one year old.

As you can see by the table to the left, our system had no violations above the allowed Maximum Contaminant Levels for your drinking water.

We're proud that your drinking water meets or exceeds all Federal and State requirements and although we have learned through our monitoring and testing that some constituents have been detected, the EPA has determined that your water **IS SAFE** at these levels.

### From Your Water Utility:

Modern Electric Water Company  
904 North Pines Road  
Spokane Valley, WA 99206  
(509) 928-4540  
modernelectricwater.com

Contact Person: Jason Beesley,  
Water Superintendent

Regular Scheduled Board of  
Directors' Meetings are held  
the fourth Wednesday of every  
month at 3:00 pm.

Parameter	Unit of Measure	MCL	MCLG	Highest Detected Level Pump Station								Likely Source of Contamination
				SO2	SO3	SO4	SO6	SO7	SO8	SO9	SO11	
Microbiology 245 Bacteriological Tests were taken during 2021												
Total Coliform Bacteria	Presence/Absence			1								Indicator Organism
Fecal Coliform and E. Coli	%	5%	0	No Constituents Detected								Bacteria whose presence indicates that water may be contaminated with human or animal wastes
Inorganic Chemicals Sample Results Within Last 5 Years												
Arsenic	ppb	10	0	4.3	1.2	1.6	3.1	1.7	3.4	2.00	1.5	Erosion of natural deposits; runoff from orchards; runoff from glass and electronics production wastes
Nitrate	ppm	10	10	0.74	0.73	0.77	0.84	0.25	0.85	0.90	0.81	Runoff from fertilizer use; leaching from septic tanks, sewage; erosion of natural deposits
Synthetic Organic Compounds Sample Results Within Last 5 Years												
Volatile Organic Contaminants	ppm	Various		No Constituents Detected								Organic chemical contaminants, including synthetic and volatile organic chemicals, which are byproducts of industrial processes and petroleum production, and can also come from gas stations, urban stormwater runoff, and septic systems.
Sample Results Within Last 5 Years												
TTHMs [Total Trihalomethanes]	ppb	80	NA	No Constituents Detected								Elongated chlorination of organic matter Disinfected water
HAA5 [Haloacetic Acids]		60	NA	No Constituents Detected								
Lead and Copper - Customer's Tap 30 Tests Were Taken During 2019				90th Percentile								
Copper	ppm	1.3	1.3	0.35								Corrosion of household plumbing systems; erosion of natural deposits; leaching from wood preservatives
Lead	ppb	15	0	0.0009								Corrosion of household plumbing systems, erosion of natural deposits
Radioactive Compounds												
Gross Alpha	pCi/L	15	0	1.4	1	<3	<3	<3	<3	<3	<3	Erosion of natural deposits
Radium 228	pCi/L	5	0	1	0.1	0.7	0.3	1.4	2.3	1.1	<1	Erosion of natural deposits

### Abbreviations

ND = Not Detected At Testing Limit  
NA = Not Applicable  
ppm = parts per million or milligrams per liter  
ppb = parts per billion or micrograms per liter  
pCi/Liter = PicoCuries per Liter

**MCL's are set at very stringent levels. To understand the possible health effects described from the many regulated constituents, a person would have to drink 2 liters of water every day at the MCL level for a lifetime to have a one-in-a-million chance of having the described health effect.**

**Protect your Spokane Aquifer!  
Please don't pour unwanted  
chemicals on the ground.**

### Notes

Maximum Contaminant Level or MCL: The highest level of a contaminant that is allowed in drinking water.

Maximum Contaminant Level Goal or MCLG: The level of a contaminant in drinking water below which there is no known or expected risk to health.

Treatment Technique or TT: A required process intended to reduce the level of a contaminant in drinking water.

Action Level or AL: The concentration of a contaminant which, if exceeded, triggers treatment or other requirements which a water system must follow.

**The Test Results shown above are for the Calendar Year 2021. Your employees of Modern Electric Water Company work hard every day to ensure an abundant and clean supply of water for your family. We ask all our customers to help us protect our water sources, which are the heart of our community, our way of life, and our children's future.**

Please dispose of all waste oil, antifreeze, vehicle batteries, pesticides, paints, gasoline, cleaners and other household hazardous waste at the following disposal sites:

Valley Transfer Station - 3941 North Sullivan Road (weekends only)  
North Transfer Station - 22123 Elk-Chattaroy Road (weekends only)  
Waste to Energy Facility - 2900 South Geiger Boulevard  
Disposal is free for residential customers. Materials must be in a leak-proof containers with the contents labeled on the outside. No containers greater than 5 gallons will be accepted. For more information call the Recycling Hotline at (509) 477-6800.