

Your drinking water is brought to your home by:

## Spokane County Water District #3

SCWD#3 operates 7 independent water systems in Spokane County and is dedicated to making sure that every drop of water delivered to your tap is clean and safe for your family. Water District Board Meetings are held weekly on Wednesday mornings at 9:00 a.m. and public attendance is welcome.

Spokane County Water District #3  
General Manager: Kelly Williquette  
1225 N. Yardley Street Spokane, WA 99212-7001  
(509) 536-0121 <https://SCWD3.org>

**Purpose:** This report is provided to all of our customers. It describes your drinking water quality for the period of January 1<sup>st</sup> to December 31<sup>st</sup>, 2022. Your water utility is committed to supplying safe water that meets or surpasses State and Federal Standards and achieves the highest standards of customer service.

**Water Source:** Your drinking water is provided by **wells that pump water from underground sources** in and around your community. The water is recharged by precipitation in the area. These wells are closely monitored and maintained. The water is naturally filtered by the surface vegetation and the soils. However, natural systems can only do so much so we must all treat the groundwater with care to keep our drinking water clean for everyone to enjoy.

As water travels over land surfaces or through the ground, it dissolves naturally occurring minerals and radioactive material. Water can also pick up contaminants resulting from human activity or the presence of animals. That's why it is important to store and dispose of all chemicals properly, fix auto fluid leaks right away, try to reduce herbicide usage by using mulch or fabric covers to prevent weeds. Remember, don't pour anything on the ground that you wouldn't want to drink.

Contaminants that may be present in water include: disinfectants and disinfection by-products; microbes; organic chemicals; inorganic chemicals; synthetic chemicals; radioactive contaminants; and pesticides and herbicides.

In order to ensure that tap water is safe to drink, Washington State and the Environment Protection Agency (EPA) prescribe regulations which limit the amount of certain contaminants in water provided by public water systems.

SCWD#3 strives to be a good steward of the aquifer and your water system. Year-round water quality monitoring, replacing aging or leaking pipes and pumps, and planning for growth are just some of the responsibilities of the District.

**Water Quality:** To ensure that your water is **clean and safe**, we test for contaminants all year long. The Department of Health and EPA prescribe regulations that limit the amount of certain contaminants in water provided by public water systems. The Food and Drug Administration (FDA) and the Washington Department of Agriculture regulations establish limits for contaminants in bottled water. **We are proud to report that your water meets or exceeds all state and federal regulations.** While some contaminants were found in the water, the Environmental Protection Agency has determined that your water is safe at these levels for you and your family. Keep in mind that the presence of contaminants doesn't mean the water is unsafe. MCLs are set at very stringent levels. A person would have to drink 2 liters of water every day at the MCL level for a lifetime to have a one-in-a-million chance of having the described health effect. Health related standards are set by the Washington State Department of Health. See table on page 3 for your most recent water sampling results.

**Important Note:** Drinking water, including bottled water, may reasonably be expected to contain at least small amounts of some contaminants. The presence does not necessarily indicate that the water poses a health risk. Some people may be more vulnerable to contaminants in drinking water than the general population. Immune-compromised persons such as persons with cancer undergoing chemotherapy, persons who have undergone organ transplants, people with HIV/AIDS or other immune system disorders, some elderly, and infants can be particularly at risk from infections. These people should seek advice about drinking water from their health providers. EPA/CDC guidelines on appropriate means to lessen the risk of infection by cryptosporidium and other microbiological contaminants or for more information about contaminants and potential health effects call the **Environmental Protection Agency's (EPA) Safe Drinking Water Hotline at 1-800-426-4791.**

### ENGLISH

This report contains important information about your drinking water. Have someone translate it for you, or speak with someone who understands it.

### RUSSIAN

Этот отчет содержит важную информацию о вашей питьевой воде. Попросите кого-нибудь перевести это для вас или поговорите с кем-то, кто понимает это.

### SPANISH

Este informe contiene información importante sobre su agua potable. Haga que alguien lo traduzca por usted o hable con alguien que lo entienda.

### VIETNAMESE

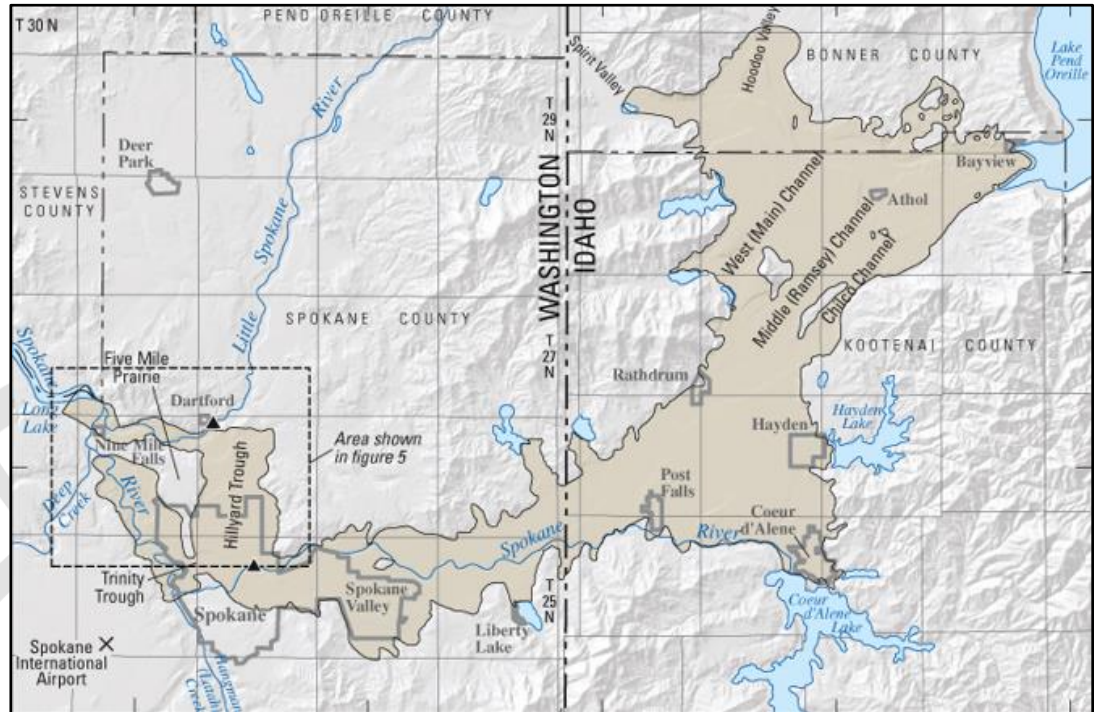
Báo cáo này chứa thông tin quan trọng về nước uống của bạn. Có ai đó dịch nó cho bạn, hoặc nói chuyện với ai đó hiểu nó.

# SPOKANE VALLEY RATHDRUM PRAIRIE AQUIFER

## Conservation Tips for Outdoor Watering:

Did you know that average homeowners use 30-60% of their total water use for the year outdoors? And experts estimate that 50% of that water used outdoors goes to waste from evaporation, wind, or runoff due to overwatering.

For information regarding ways to save water, visit our online website at [scwd3.org](http://scwd3.org), follow us on Twitter, visit [spokanewateringnerds.org](http://spokanewateringnerds.org) / [tips-to-save-water](http://tips-to-save-water) or search "water conservation tips" in your web browser.



**Water Use Efficiency:** In addition to monitoring the quality of the water, SCWD#3 also works to make sure we are **using water efficiently**. The District set new water use efficiency goals in 2021 (found below) and report our progress annually.

## **DEMAND SIDE GOAL: Reduce Residential Usage by 1/2 GPD/ERU Each Year**

The District's goal for residential use is 676.5 gallons per day per equivalent residential unit (GPD/ERU). Currently for 2022, our residential customers averaged 654 GPD/ERU which is a savings of over 1.1 million gallons of water this year. This entire system has been replaced with radio read meters which we now read monthly and year around. These meters also notify District staff of low and high leak alarms which are used to follow up with customers each month. By reading meters 12 times a year, prompt leak detection, and showing historical usage on online water bills, customers can identify and correct high usage issues faster. We feel that these factors have contributed to the savings we've seen so far. Our goal is to continue to notify high users and continue to educate customers on water conservation.

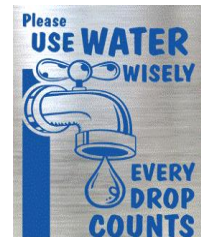
## **SUPPLY SIDE GOAL: Reduce the District's Average Distribution System Leakage Below 9.5% for the Next 6 Years**

Our average is currently 4.9%, so we were able to meet our goal. Annually, the District sets aside a budget specifically for leak detection services and equipment which led to the discovery and repair of a 1" service line that was leaking this year. We will continue to be aggressive with early leak detection and repairs to maintain our goal for years to come.

**Free Online Bill Pay:** SCWD#3 switched online bill pay providers to **xpress BILL PAY**. This change is designed to make online bill pay easier and best of all **it's free!** **xpress BILL PAY** is a secure online bill payment system that offers 24-7 access to your utility account to make payments with credit cards, debit cards, or electronic funds transfers. If you have multiple accounts, **xpress BILL PAY** gives customers the ability to manage all their service provider billing accounts from a single login. **Auto Pay** allows customers to set up automatic payments and not worry about them again. A complete history of payment confirmations, online transactions, and **Water Consumption History** are also provided. Email reminder alerts are sent to customers when bills arrive, when they're due, and when they're paid. Visit the website at [www.xpressbillpay.com](http://www.xpressbillpay.com) and sign up today! Or download the mobile app!



From Your Local Water Utility  
**Spokane County Water District #3**  
<https://SCWD3.org>





## SOURCE WATER TESTING (sample taken at the well)

CONTAMINANT	SAMPLE YEAR	UNITS	MCLG	MCL	HIGHEST DETECTION	POSSIBLE SOURCE
Nitrate	2022	ppm	10	10	5.42	Runoff from Fertilizer Use; Leaching from Septic Tanks, Sewage; Erosion of Natural Deposits
Arsenic	2019	ppb	0	10	2.6	Erosion of Natural Deposits; Runoff from Orchards; Runoff from Glass and Electronics Production Wastes
Gross Alpha	2020	pCi/L	n/a	15	ND	Erosion of Natural Deposits
Radium 228	2020	pCi/L	n/a	5	ND	Erosion of Natural Deposits
Synthetic Organic Chemicals	2016	ppb	Varies by chemical	Varies by chemical	ND	Varies by Chemical
Volatile Organic Chemicals	2022	ppb	Varies by chemical	Varies by chemical	ND	Varies by Chemical

## DISTRIBUTION SYSTEM TESTING (sample taken at the tap)

CONTAMINANT	SAMPLE YEAR	UNITS	MCLG	AL	90 <sup>TH</sup> PERCENTILE	POSSIBLE SOURCE
Lead	2022	ppb	0	15	0.9	Corrosion of the Household Plumbing Systems; Erosion of Natural Deposits; Leaching from Wood Preservatives.
Copper	2022	ppb	1300	1300	205	
CONTAMINANT	SAMPLE YEAR	UNITS	MCLG	MCL	HIGHEST DETECTION	POSSIBLE SOURCE
Total Trihalomethanes	2020	ppb	0	80	0.5	By-product of Chlorination
Haloacetic Acids	2020	ppb	0	60	ND	By-product of Chlorination
E.coli Bacteria	2022		0	A routine sample and a repeat sample are total coliform positive, and one is also E.coli positive	ND	Human and Animal Fecal Waste

**RADON** is a naturally occurring radioactive gas that is common in the Spokane area. Exposure to excessive amounts of radon may increase cancer risk. Your drinking water, in most cases is a very small source of radon in indoor air. For local assistance concerning radon in your home, contact the Spokane County Health District at (509) 324-1560 ext. 5

**LEAD:** If present, elevated levels of lead can cause serious health problems, especially for pregnant women and young children. Lead in drinking water is primarily from materials and components associated with service lines and home plumbing. Spokane County Water District #3 is responsible for providing high quality drinking water, but cannot control the variety of materials used in plumbing components. When your water has been sitting for several hours, you can minimize the potential for lead exposure by flushing your tap for 30 seconds to 2 minutes before using water for drinking or cooking. If you are concerned about lead in your water, you may wish to have your water tested. Information on lead in drinking water, testing methods, and steps you can take to minimize exposure is available from EPA's Safe Drinking Water Hotline at **1-800-426-4791** or online at <http://www.epa.gov/safewater/lead>

**NITRATE** in drinking water at levels above 10 ppm is a health risk for infants of less than six months of age. High nitrate levels in drinking water can cause blue baby syndrome. Nitrate levels may rise quickly for short periods of time because of rainfall or agricultural activity. If you are caring for an infant, you should ask for advice from your health care provider.

## ABBREVIATIONS:

**AL** – Action Level – The concentration of a contaminant which, if exceeded, triggers treatment or other requirements which a water system must follow.

**MCL** – Maximum Contaminant Level – The highest level of a contaminant allowed in drinking water.

**MCLG** – Maximum Contaminant Level Goal – The level of a contaminant in drinking water below which there is no known or expected risk to health.

**ND** – Not Detected

**NA** – Not Applicable

**pCi/L** – Pico Curies per Liter – a unit of radioactivity

**90<sup>th</sup> Percentile** – 90% of at-risk homes had this concentration or less of lead/copper.

**Ppb** – Parts per billion or micrograms per liter. About 1 drop in one of the largest tanker trucks used to haul gasoline would represent 1 ppb.

**Ppm** – Parts per million or milligrams per liter. About 4 drops in a 55-gallon barrel would represent 1ppm.

## CAPITAL IMPROVEMENT PROJECTS

**2022 Water Rate Analysis:** With rising operation and maintenance costs due to inflation, we elected to conduct another water rate analysis in 2022. The purpose of the rate analysis is to determine the financial resiliency of the District at the current water rates to determine if they will adequately fund operation and maintenance costs, current debt service payments (loans), replacement of depreciated assets, capital system improvements, while maintaining our reserve balance goals.

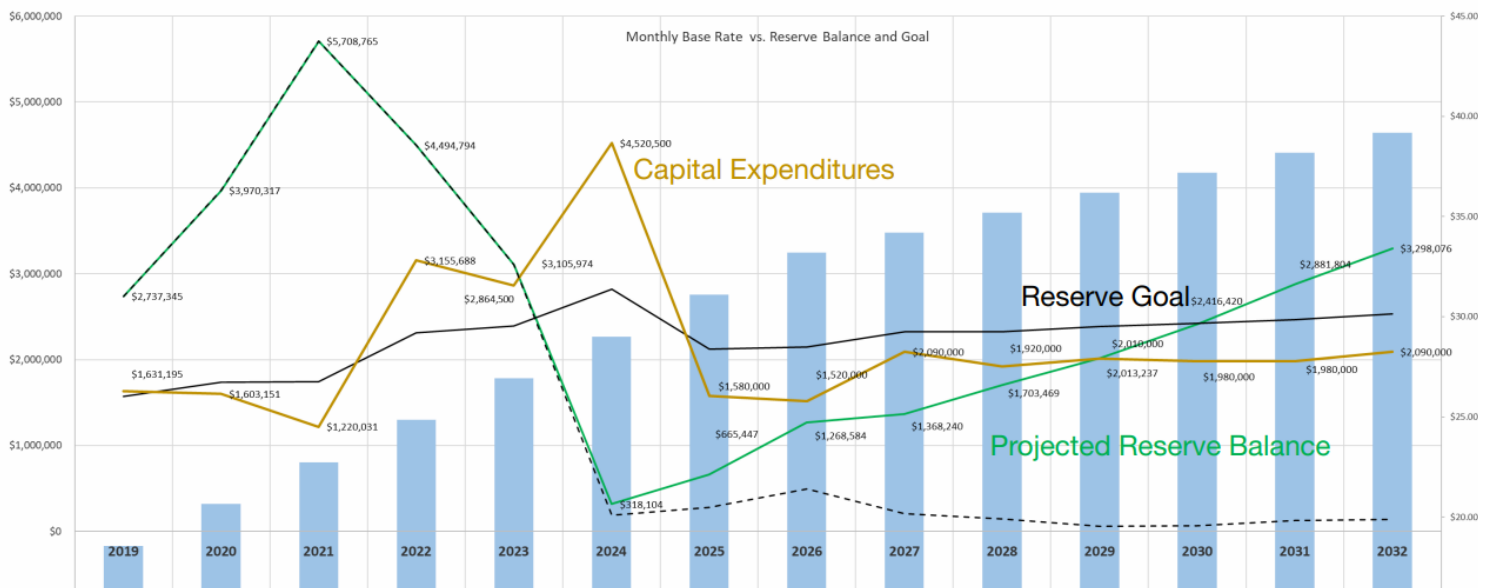
Through the water rate analysis, the District was presented with several options of rate increase alternatives and chose the option that best-satisfied the following items:

- Utilize current reserve balance which has grown over the last three years due to project delays.
- Minimize rate increases while ultimately working to maintain the reserve goal.
- Continuing to fund Capital Improvement Projects averaging \$2.2 million per year which is on par with the estimated annual system depreciation which is estimated at \$2.0 million per year.

Over the next 20 years, the District anticipates spending \$930,000 on improvements in WSA 6 due to depreciation and to increase fire flow in the area. This includes replacing 1,600 lineal feet of existing 6" steel water main in Hillcrest with 8", replacing 2,100 lineal of 6" steel main in Palomino with 8", and replacing the pumps at the booster station. District wide, we budget \$2.2 million per year for capital improvement projects, \$3.01 million on operation and maintenance costs, \$200,000 on loan payments, while setting a reserve balance goal of \$2.0 million to cover 4 months of operating budget, emergency replacement of equipment, capital project contingencies, and 1 annual loan payment.

**Results of the analysis** below indicate that a series of base rate increases are required, starting with a \$2.09 increase each year through the year 2026, and \$1.00 base rate increase each year following. Through the series of base rate increases, we anticipate that the District's reserve balance will drop to \$300,000 in 2024, and would rebound back to our goal by 2030.

**\$2.09 increase/year through 2026,  
\$1.00 each year after**



Spokane Aquifer Joint Board  
Local Water Utilities United for Safe Drinking Water

