

Your drinking water is brought to your home by:

Spokane County Water District #3

SCWD#3 operates 7 independent water systems in Spokane County and is dedicated to making sure that every drop of water delivered to your tap is clean and safe for your family. Water District Board Meetings are held weekly on Wednesday mornings at 9:00 a.m.

Spokane County Water District #3
General Manager: Kelly Williquette
1225 N. Yardley Street Spokane, WA 99212-7001
(509) 536-0121 <https://SCWD3.org>

Water Source: Your drinking water comes from the **Spokane Valley Rathdrum Prairie Aquifer** (see map, page 2). This pristine and abundant aquifer lies in two states, holds ten trillion gallons of water, and is the sole source of drinking water for almost half a million people in the region. This groundwater source is recharged by the local precipitation and the snow pack in northern Idaho and western Montana. It is naturally filtered by surface vegetation and the layers of gravel above the water line. The aquifer travels through northern Idaho and into Washington where it discharges into the Spokane River and the Little Spokane River.

The SVRP aquifer is unique because of its vast size, swift flow of water, porous soils and the fact that the land over the aquifer is extensively developed. These factors make our aquifer uniquely susceptible to contamination. We must all treat the aquifer with care to keep our drinking water clean for everyone to enjoy. In the past one hundred years aquifer levels have remained constant, however scientific models have shown us that even though the aquifer is plentiful it is not unlimited. Careful planning will be required in the coming years to ensure that this aquifer remains clean and available for our community. Preserving our water sources for the future is a priority for SCWD#3. To find out more about how you can be an active partner in our efforts visit:

www.spokaneaquifer.org/education-awareness/water-conservation/

SCWD#3 strives to be a good steward of the aquifer and your water system. Year-round water quality monitoring, replacing aging or leaking pipes and pumps, and planning for growth are just some of the responsibilities of the District.

ENGLISH

This report contains important information about your drinking water. Have someone translate it for you, or speak with someone who understands it.

RUSSIAN

Этот отчет содержит важную информацию о вашей питьевой воде. Попросите кого-нибудь перевести это для вас или поговорите с кем-то, кто понимает это.

SPANISH

Este informe contiene información importante sobre su agua potable. Haga que alguien lo traduzca por usted o hable con alguien que lo entienda.

VIETNAMESE

Báo cáo này chứa thông tin quan trọng về nước uống của bạn. Có ai đó dịch nó cho bạn, hoặc nói chuyện với ai đó hiểu nó.

Water Quality: In order to ensure that your water is **clean and safe**, we test for contaminants all year long. The Department of Health and EPA prescribe regulations that limit the amount of certain contaminants in water provided by public water systems. The Food and Drug Administration (FDA) and the Washington Department of Agriculture regulations establish limits for contaminants in bottled water. **We are proud to report that your water meets or exceeds all state and federal regulations.** While some contaminants were found in the water, the Environmental Protection Agency has determined that your water is safe at these levels for you and your family. Keep in mind that the presence of contaminants doesn't mean the water is unsafe. MCLs are set at very stringent levels. A person would have to drink 2 liters of water every day at the MCL level for a lifetime to have a one-in-a million chance of having the described health effect. Health related standards are set by the Washington State Department of Health. See table on page 3 for your most recent water sampling results.

Water Use Efficiency: In addition to monitoring the quality of the water, SCWD#3 also works to make sure we are **using water efficiently**. We set water use efficiency goals for our system in 2008, updated them in 2015, and report our progress annually.

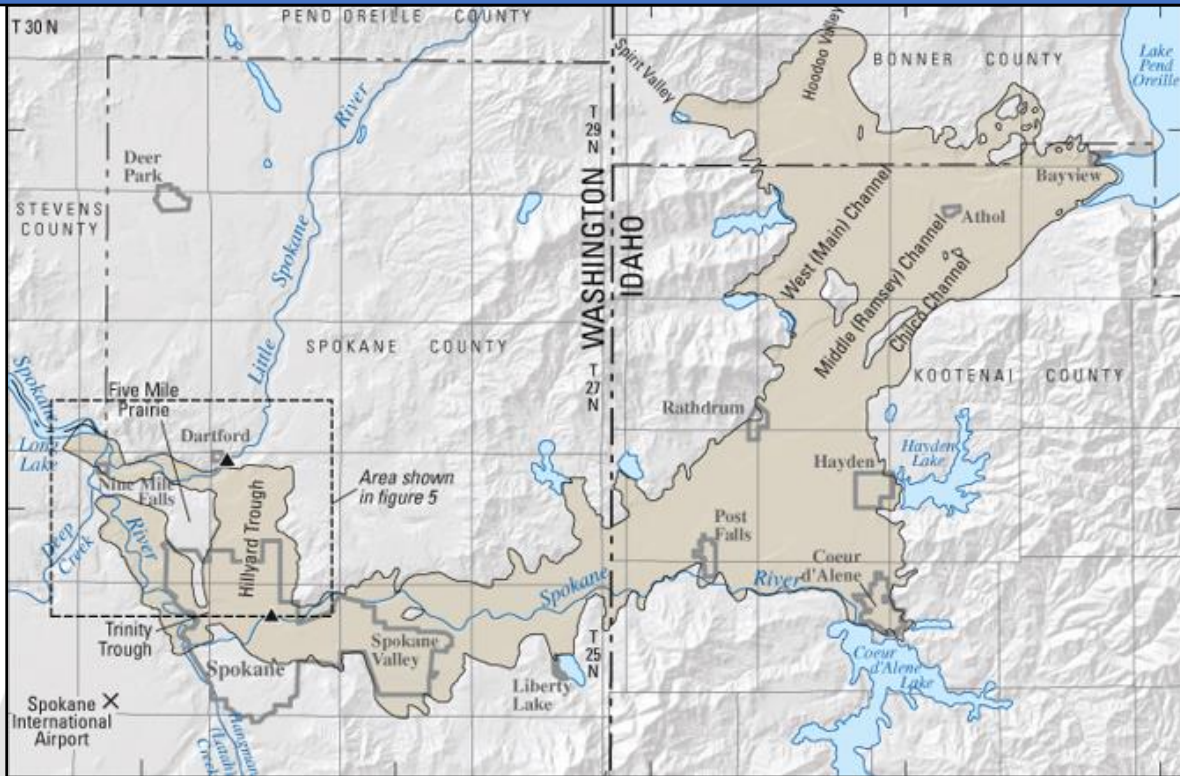
GOAL: REDUCE ANNUAL WATER USAGE BY 96,600 GALLONS PER YEAR BY 2021

Record setting temperatures and extreme drought conditions posed a challenge to reduce annual water usage by 96,600 gallons during 2021 and therefore we did not meet our goal. However, the District met its own goal of reducing distribution system loss below 10%. Through early and aggressive leak detection efforts we were able to reduce system leakage to 7.5% for the calendar year.

OUTDOOR WATER CONSERVATION TIPS

Did you know that average homeowners use 30-60% of their total water use for the year outdoors? And experts estimate that 50% of that water used outdoors goes to waste from evaporation, wind, or runoff due to overwatering. For information regarding ways to save water, visit our website regularly at <https://SCWD3.org>, follow us on Twitter, or search "water conservation tips" in your web browser.

SPOKANE VALLEY RATHDRUM PRAIRIE AQUIFER

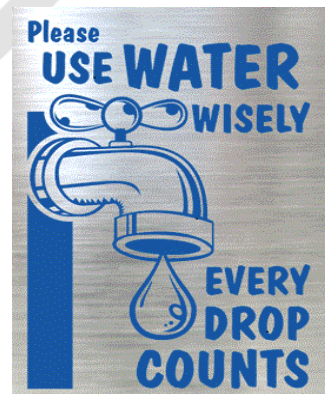


Purpose: This report is provided to all of our customers. It describes your drinking water quality for the period of January 1st to December 31st, 2021. Your water utility is committed to supplying safe water that meets or surpasses state and federal standards and achieves the highest standards of customer service.

Important Note: Drinking water, including bottled water, may reasonably be expected to contain at least small amounts of some contaminants. The presence does not necessarily indicate that the water poses a health risk. Some people may be more vulnerable to contaminants in drinking water than the general population. Immune-compromised persons such as persons with cancer undergoing chemotherapy, persons who have undergone organ transplants, people with HIV/AIDS or other immune system disorders, some elderly, and infants can be particularly at risk from infections. These people should seek advice about drinking water from their health providers. EPA/CDC guidelines on appropriate means to lessen the risk of infection by cryptosporidium and other microbiological contaminants or for more information about contaminants and potential health effects call the **Environmental Protection Agency's (EPA) Safe Drinking Water Hotline at 1-800-426-4791**.

Free Online Bill Pay: SCWD#3 switched online bill pay providers to **xpress BILL PAY**.

This change is designed to make online bill pay easier and best of all **it's free!** **xpress BILL PAY** is a secure online bill payment system that offers 24-7 access to your utility account to make payments with credit cards, debit cards, or electronic funds transfers. If you have multiple accounts, **xpress BILL PAY** gives customers the ability to manage all their service provider billing accounts from a single login. **Auto Pay** allows customers to set up automatic payments and not worry about them again. A complete history of payment confirmations, online transactions, and **Water Consumption History** are also provided. Email reminder alerts are sent to customers when bills arrive, when they're due, and when they're paid. Visit the website at www.xpressbillpay.com and sign up today! Or download the mobile app!



From Your Local Water Utility
Spokane County Water District #3
<https://SCWD3.org>

SOURCE WATER TESTING (sample taken at the well)

CONTAMINANT	UNITS	MCLG	MCL	HIGHEST DETECTION	POSSIBLE SOURCE
Nitrate	ppm	10	10	3.04	Runoff from Fertilizer Use; Leaching from Septic Tanks, Sewage; Erosion of Natural Deposits
Arsenic	ppb	n/a	10	3.8	Erosion of Natural Deposits; Runoff from Orchards; Runoff from Glass and Electronics Production Wastes
Barium	ppm	2	2	0.04	Discharge of Drilling Wastes; Discharge from Metal Refineries; Erosion of Natural Deposits
Gross Alpha (2020)	pCi/L	n/a	15	ND	Erosion of Natural Deposits
Radium 228 (2020)	pCi/L	n/a	5	0.97	Erosion of Natural Deposits
Synthetic Organic Chemicals (2019)	ppb	Varies by chemical	Varies by chemical	ND	Varies by Chemical
Volatile Organic Chemicals	ppb	Varies by chemical	Varies by chemical	ND	Varies by Chemical

DISTRIBUTION SYSTEM TESTING (sample taken at the tap)

CONTAMINANT	UNITS	MCLG	AL	90 TH PERCENTILE	POSSIBLE SOURCE
Lead (2020)	ppb	0	15	2.6	Corrosion of the Household Plumbing Systems; Erosion of Natural Deposits; Leaching from Wood Preservatives.
Copper (2020)	ppb	1300	1300	110	
CONTAMINANT	UNITS	MCLG	MCL	HIGHEST DETECTION	POSSIBLE SOURCE
Total Trihalomethanes	ppb	0	80	6.43	By-product of Chlorination
Haloacetic Acids	ppb	0	60	1.16	By-product of Chlorination
E.coli Bacteria		0	A routine sample and a repeat sample are total coliform positive, and one is also E.coli positive	ND	Human and Animal Fecal Waste

RADON is a naturally occurring radioactive gas that is common in the Spokane area. Exposure to excessive amounts of radon may increase cancer risk. Your drinking water, in most cases is a very small source of radon in indoor air. For local assistance concerning radon in your home, contact the Spokane County Health District at (509) 324-1560 ext. 5

LEAD If present, elevated levels of lead can cause serious health problems, especially for pregnant women and young children. Lead in drinking water is primarily from materials and components associated with service lines and home plumbing. Spokane County Water District #3 is responsible for providing high quality drinking water, but cannot control the variety of materials used in plumbing components. When your water has been sitting for several hours, you can minimize the potential for lead exposure by flushing your tap for 30 seconds to 2 minutes before using water for drinking or cooking. If you are concerned about lead in your water, you may wish to have your water tested. Information on lead in drinking water, testing methods, and steps you can take to minimize exposure is available from EPA's Safe Drinking Water Hotline at **1-800-426-4791** or online at <http://www.epa.gov/safewater/lead>

ABBREVIATIONS:

AL – Action Level – The concentration of a contaminant which, if exceeded, triggers treatment or other requirements which a water system must follow.

MCL – Maximum Contaminant Level – The highest level of a contaminant allowed in drinking water.

MCLG – Maximum Contaminant Level Goal – The level of a contaminant in drinking water below which there is no known or expected risk to health.

ND – Not Detected

NA – Not Applicable

pCi/L – Pico Curies per Liter – a unit of radioactivity

90th Percentile – 90% of at-risk homes had this concentration or less of lead/copper.

Ppb – Parts per billion or micrograms per liter. About 1 drop in one of the largest tanker trucks used to haul gasoline would represent 1 ppb.

Ppm – Parts per million or milligrams per liter. About 4 drops in a 55-gallon barrel would represent 1ppm.

CAPITAL PROJECTS UPDATE

System #1 and #2 Consolidation: During 2021 our District finalized the consolidation of two separate zones, system #1 and system #2, into one large water system. This was a several year project that began in 2018 with funding from a low interest loan through Washington State Department of Health's Drinking Water State Revolving Fund. The project involved installing 11,500 feet of 24" water main and 5,200 feet of 18" water main throughout a large portion of Spokane Valley.

By completing the project, we were able to correct a water source redundancy deficiency by allowing up to 6,000 gallons per minute to flow by gravity from system #2 into system #1. This consolidation will also allow us to share water rights between the two systems in the attempt to stay ahead of growth as it continues in our area. Another benefit to completing the project, we're now able to share storage between the two systems and eliminate the need to add additional storage tanks prior to full buildout. Currently through this intertie, water can only travel one way, from system #2 into system #1.

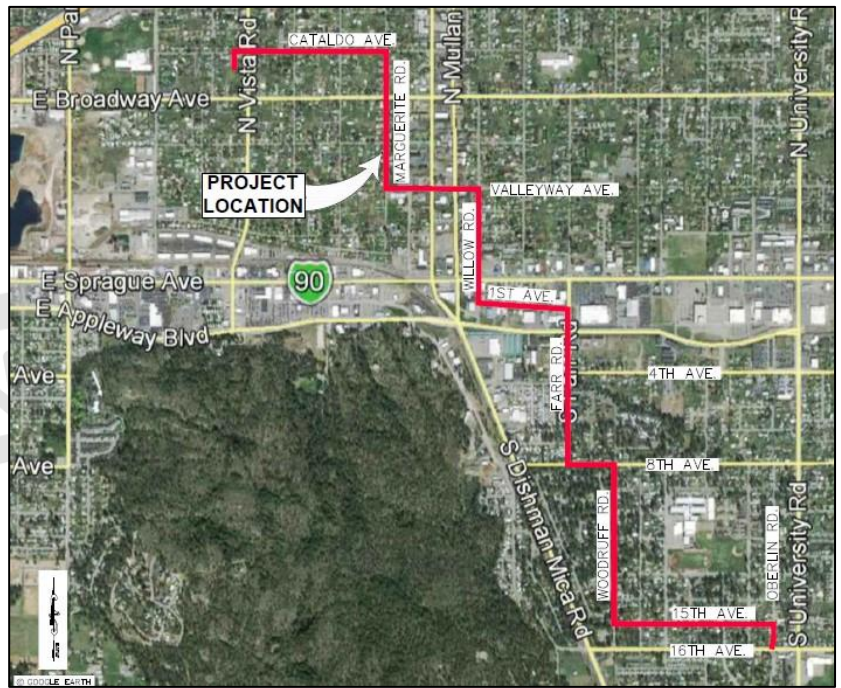
Future plans are to install a booster station near Vista and Cataldo (slated for 2025), which will give us the ability to pump water the opposite direction and add an additional layer of redundancy and reliability to the area.

Meter Replacement Program: In 2016, we started a multi-year replacement project to update our water meters with radio read technology. Each water meter is connected to a mobile endpoint (grey transmitter in photo to the left) that allows utility workers in the field to read water meter data from the safety of their vehicles. This information is collected from a transceiver mounted on a meter reading vehicle that travels through the neighborhood once a month. The data is then uploaded directly into our utility billing software at the office and used to create water bills. Utilizing radio read technology has improved the accuracy of water meter data being collected and cuts back on staff time, reducing operational costs. The endpoints are also capable of storing up to forty days of hourly usage data which can be a helpful tool to diagnose when a leak started or the cause of a high water bill.



To date, the District has installed nearly 6,000 radio read water meters with approximately 4,500 left to replace. Water Service Areas (WSA's) 5, 6, 8, and 9 are complete and we're currently working on areas of WSA 1, 3, and 4. If you have an inside meter that hasn't been upgraded, call our office at 509-536-0121 to schedule an appointment, it only takes 10-15 minutes to complete!

Future Capital Projects- System #1: Over the course of the next 10 years, the District has plans to replace 6,500 feet of depreciated water main throughout system #1, install 4,200 feet of new main to increase operational reliability, and upsize over 15,100 feet of water main to improve fire flow to certain areas of this system. Other projects will include installing a new booster station at Vista and Cataldo, replacing the booster pumps at our Lower Painted Hills Booster Station on Mohawk Drive, re-coat several of the above ground steel storage tanks, install emergency backup power capabilities at some of our critical well sites, and wrap up our water meter replacement program.



Spokane Aquifer Joint Board
Local Water Utilities United for Safe Drinking Water

