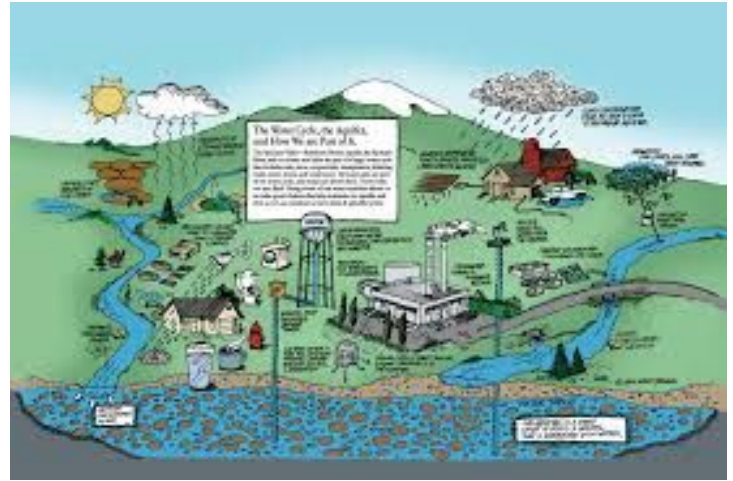
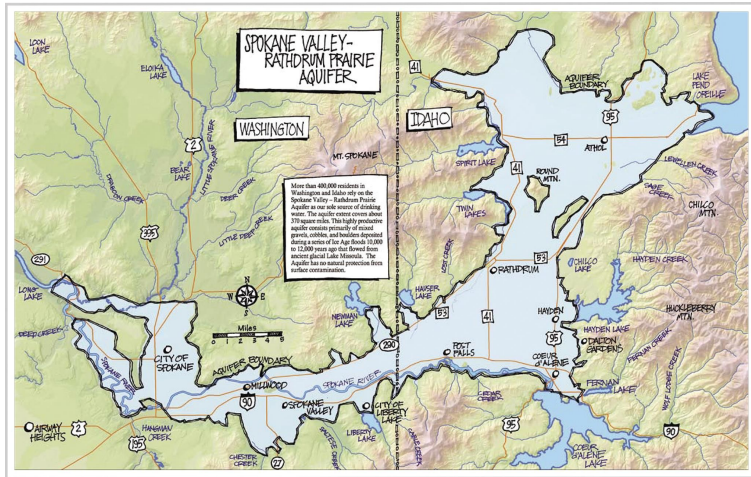


Aquifer Landscape Art Lesson



The Spokane Valley-Rathdrum Prairie Aquifer



Did you know that all the water we use comes from an aquifer that flows below our feet?

The aquifer is made up of a layer of rocks and water. This underground layer spans 370 square miles from Idaho to Spokane.

The Spokane River flows over our aquifer. In some areas the river feeds the aquifer, and in other areas the aquifer flows back in, giving the river fresh clean water.

The aquifer is also fed by the snowmelt from surrounding mountains, rainfall, and area lakes. Some large lakes, such as Coeur D'Alene and Pend Oreille, and some small lakes like Newman and Liberty all recharge our aquifer.

Let's Begin!

Start by Folding

Start by laying your paper vertically. Next fold your paper in half. Now fold your paper in half again.

When you unfold your paper, you should have three evenly spaced creases.



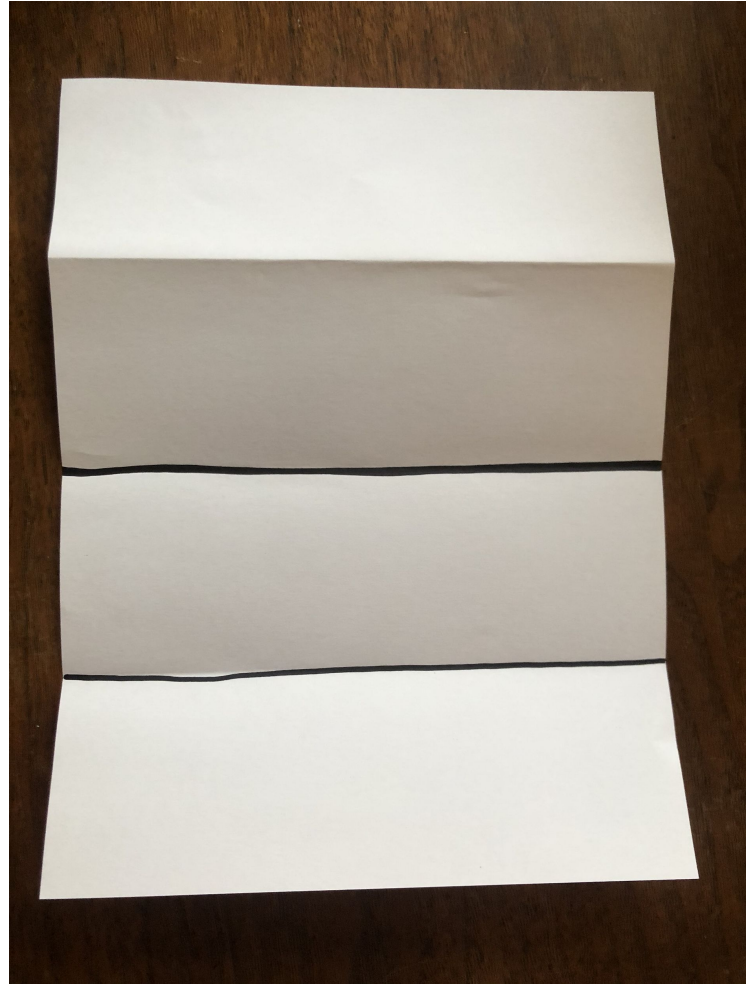
Line Drawing

With a sharpie, draw a line across the middle crease, making it extra dark and thick.

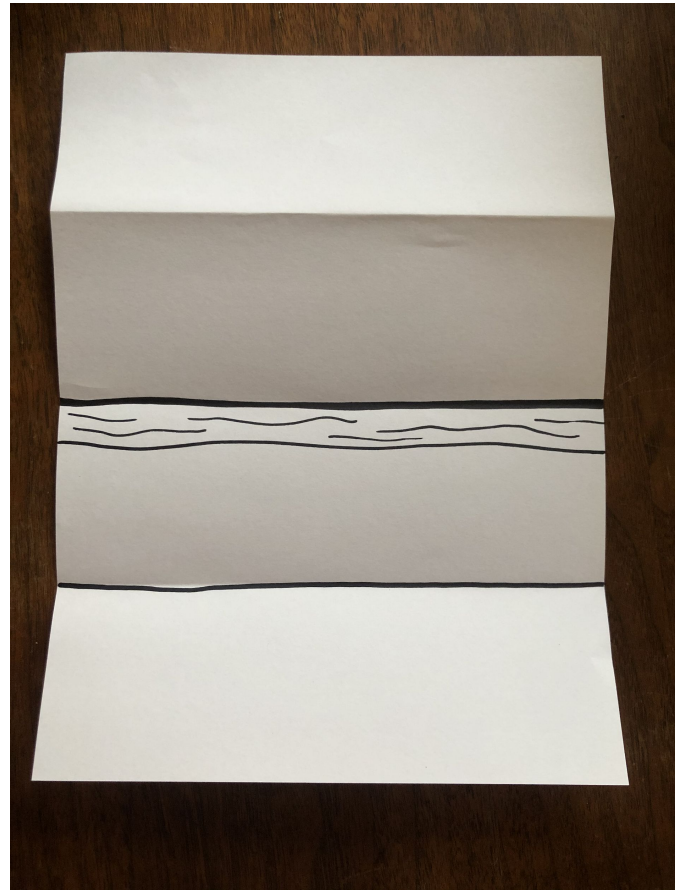
Then draw another line across the bottom crease.

Leave the top crease blank.

The line in the middle of the paper is the horizon line.



Draw another parallel line below the middle horizon line, leaving about a finger width between the lines. Next, draw some horizontal wavy shorter lines in between the two main lines. This represents the Spokane River, which runs directly over the aquifer in some areas.



In the space below the river, draw irregular ovals, filling the entire area with these shapes. This represents the layer of rock and water below us, the aquifer.



Above the horizon line, draw the outline of Spokane City. You can add whatever Spokane buildings you like, remembering to focus on their overall shape as mostly rectangles. Make your buildings as tall as the crease that runs across the top of the paper.



Starting near the top crease, draw a mountain. Our aquifer receives water by snowmelt from area mountains that feed streams, lakes and the Spokane River.



Fold the bottom crease of your paper back up.



Drawing on the back of the bottom section of the paper, add a half oval for the bridge. Next, draw a horizontal line right below the oval to represent the waterfalls of downtown Spokane.





Using crayons, water colors, or both, fill in the entire picture with color.

Show us what you made!

We want to see your lovely art! Share it with us at info@spokaneaquifer.org.